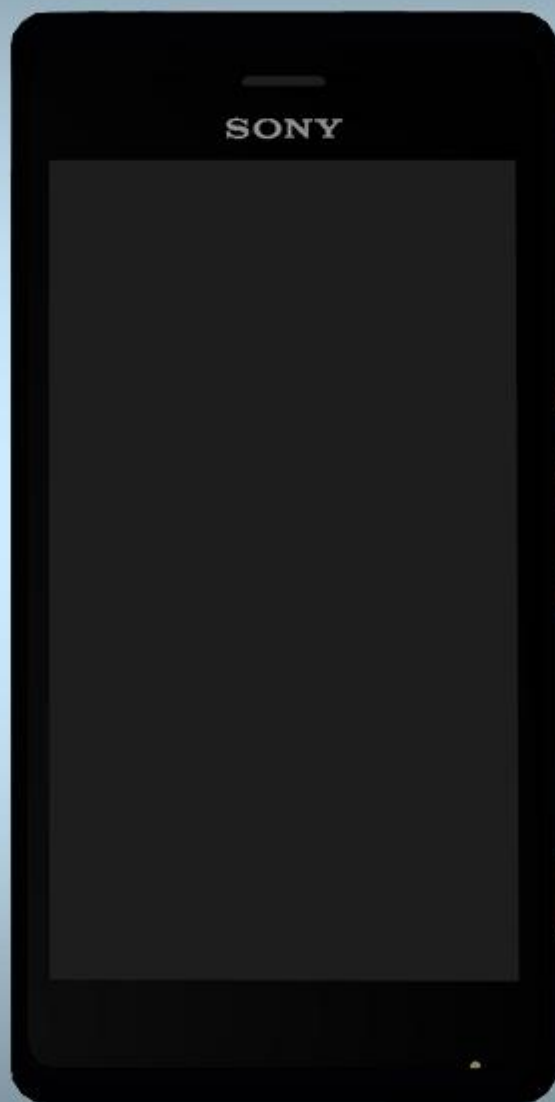


# Component Replacement

- electrical -



*Xperia™ M, Xperia™ M Dual*  
*C1904, C1905, C2004, C2005*

**CONTENTS**

1 Replaceable Components ..... 3

2 Component Placing..... 5

3 Additional Repair info ..... 6

4 Revision History ..... 9

*For general information about electrical repair related issues, refer to 1220-1336: Generic Repair Manual - electrical*

*Test after electrical replacement: refer to 1273-1772 Mechanical Test Instruction*

*Do not remove shield can lids (Heat pasta are added and RF performance will be damaged)*

# 1 Replaceable Components

## EXPLANATION OF ABBREVIATIONS USED IN THE COLUMN 'COMMENTS' BELOW

### **COMPONENT LOCATION**

**P** = Primary side

**S** = Secondary side

### **REPAIR METHOD**

**HA** = Hot Air (removal & mounting)

**ST** = Soldering Tool (removal & mounting)

**HA/ST** = Hot Air for removal - Soldering Tool for mounting

**BGA** = BGA Station

**BH** = Bottom Heater

### **ADDITIONAL INFORMATION**

⇒1 (2,3,4, etc.) = Proceed to 'Additional Repair Info' for further instructions in the indicated section(s).

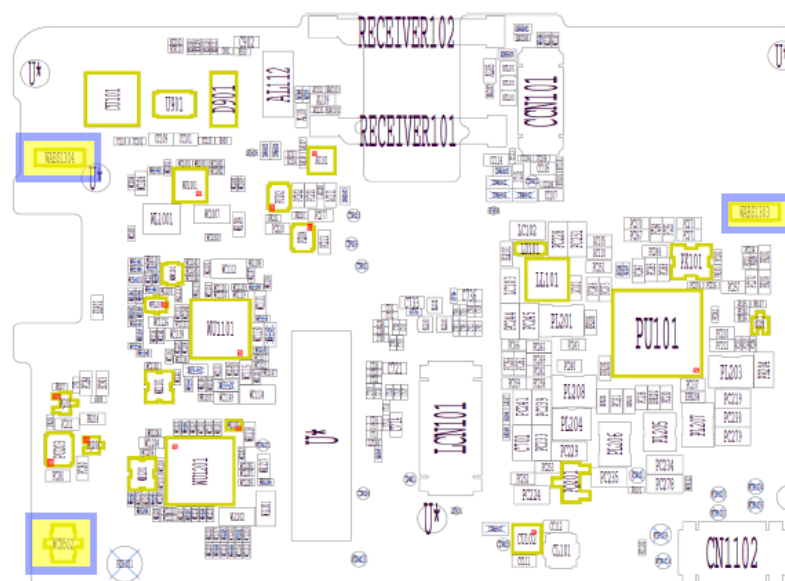
| Position | Component                       | Part no.    | Comments          |
|----------|---------------------------------|-------------|-------------------|
| ACN201   | IO Connector                    | 620K00J9005 | P HA+BH ⇒1        |
| ASF201   | Audio Jack Holder               | 440NIK0920A | P HA+BH ⇒1        |
| CN901    | USB Connector                   | 620B0019005 | P HA+BH or BGA ⇒2 |
| CN902    | Micro USB Holder                | 440NIK0820A | P HA+BH ⇒2        |
| MIC101   | Microphone                      | 750041054TZ | P HA+BH or BGA ⇒3 |
| PCON201  | Battery Connector               | 620G0V0Z005 | P HA+BH or BGA ⇒4 |
| WABS1303 | Spring Antenna GND              | 440NIK0060A | S HA+BH ⇒5        |
| WABS1304 | Spring Antenna GND              | 440NIK0060A | S HA+BH ⇒6        |
| WAGS1301 | ANTENNA Spring                  | 440BE905Z0A | P HA+BH ⇒7        |
| WANS1301 | Spring Antenna GND              | 440NIK0060A | P HA+BH ⇒8        |
| WANS1302 | Spring Antenna GND              | 440NIK0060A | P HA+BH ⇒8        |
| WANS1303 | Spring Antenna GND              | 440NIK0060A | P HA+BH ⇒9        |
| WANS1304 | Spring Antenna GND              | 440NIK0060A | P HA+BH ⇒9        |
| WCN501   | RF Connector MS-156C(48)        | 620F0035004 | P HA+BH ⇒10       |
| WCN502   | RF Connector,W.FL2-R-SMT-1 (80) | 620F009J001 | S HA+BH ⇒11       |
| WCN1101  | RF Connector MS-156C(48)        | 620F0035004 | P HA+BH ⇒12       |

## 2 Component Placing

To access the Component Placing document, double-click the icon below.  
Applicable for on-screen viewing only – icon not shown on hard-copies.



**Primary side**



**Secondary side**

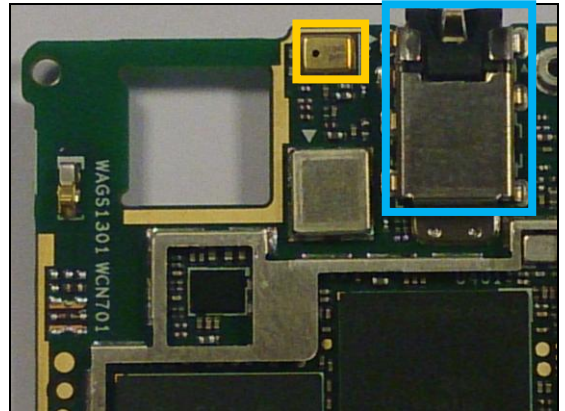
### 3 Additional Repair info

1

ACN201, ASF201

*Replace if audio jack not working*

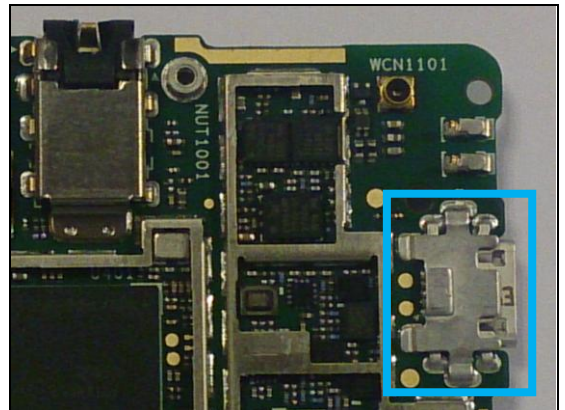
*Protect the microphone with capton tape!*



2

CN901, CN902

*Replace if mechanical damaged (USB charger or data transfer not working)*



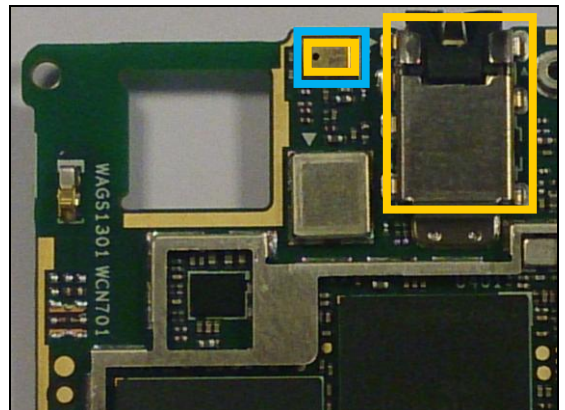
3

MIC101

*Replace if no audio from secondary microphone.*

*Protect the Audio connector with capton tape!*

*When replacing protect secondary mic with capton tape!*

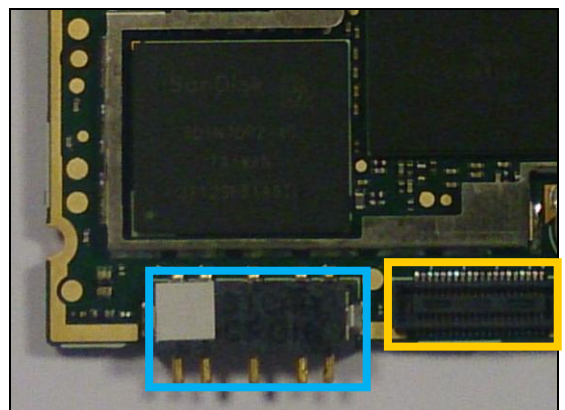


4

PCON201

*Replace if mechanical damaged. (Phone dead or power off)*

*Protect the BtB connector with capton tape!*



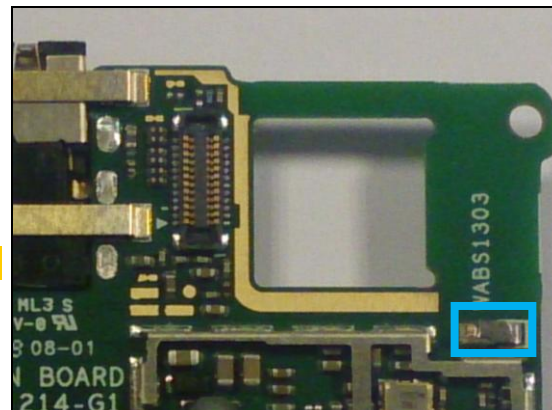


## Repair Actions: Additional Repair Info

5

WABS1303

**Replace if mechanical damaged. (Grounding Pin)**

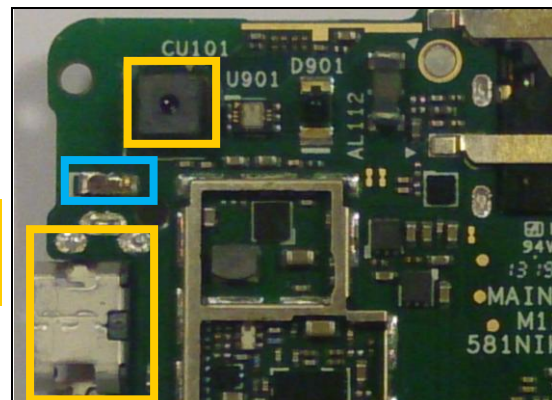


6

WABS1304

**Replace if mechanical damaged. (Grounding Pin)**

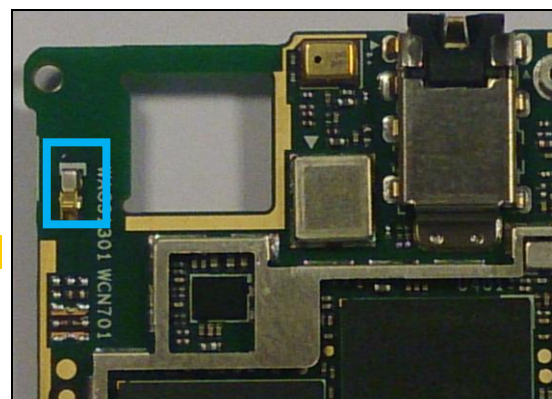
**Protect the USB connector and Camera with capton tape!**



7

WAGS1301

**Replace if mechanical damaged (No or bad GPS)**

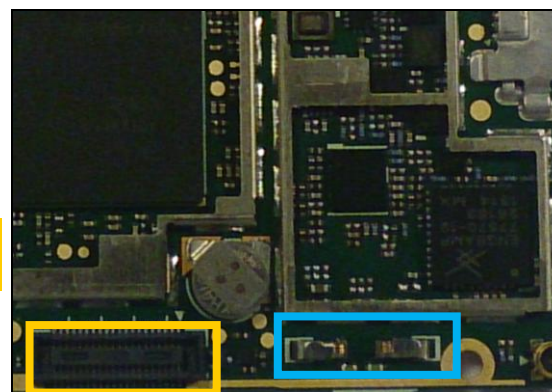


8

WANS1301, WANS1302

**Replace if mechanical damaged (No or bad NFC)**

**Protect the BtB connector with capton tape!**

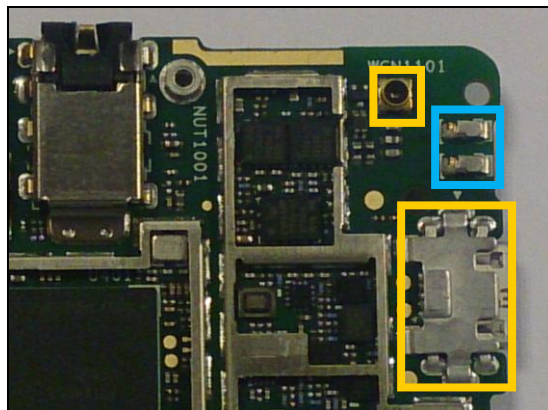


## Repair Actions: Additional Repair Info

9

WANS1303, WANS1304

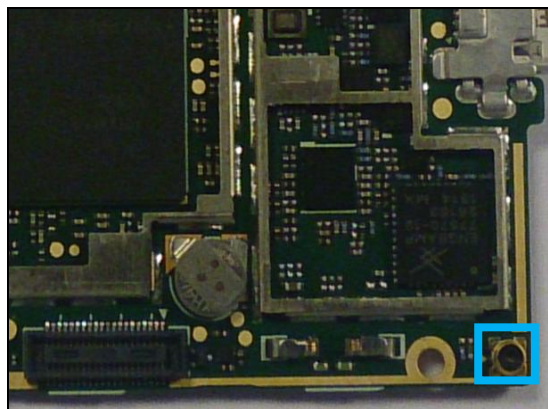
*Replace if mechanical damaged (No or bad WLAN/ BT)  
Protect the USB and RF connectors with capton tape!*



10

WCN501

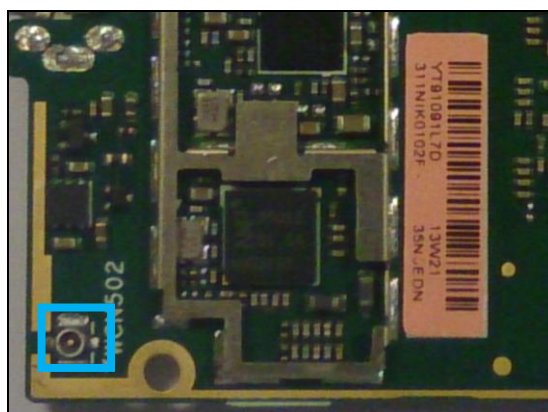
*Replace if open circuit 1-2 (No or bad network, main antenna)*



11

WCN502

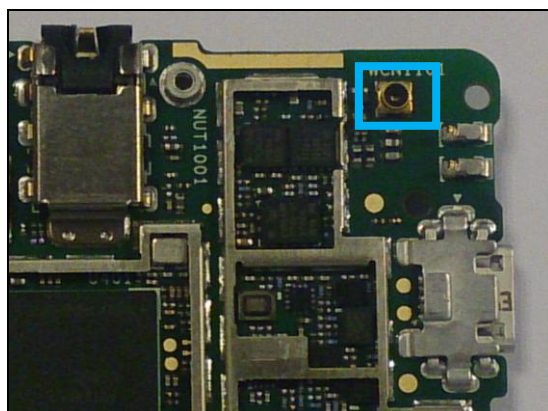
*Replace if mechanical damaged (No or bad network, main antenna)*



12

WCN1101

*Replace if open circuit 1-2 (No or bad WLAN/ BT)*





## 4 Revision History

| Rev. | Date       | Changes / Comments |
|------|------------|--------------------|
| 1    | 2014-06-05 | Initial release    |